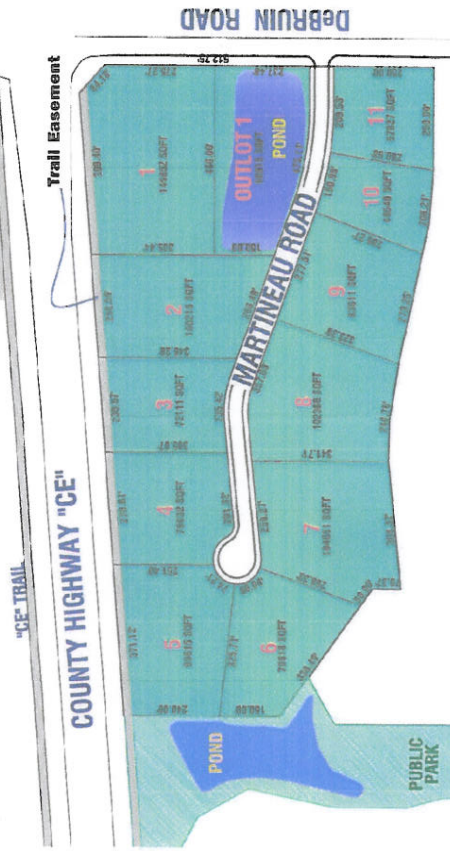


The Locks Business Park



Zoned For Business To Include:

- Business Offices
- Professional Offices
- Clerical/General Offices
- Health & Nature Based Businesses

Is Your Business A...

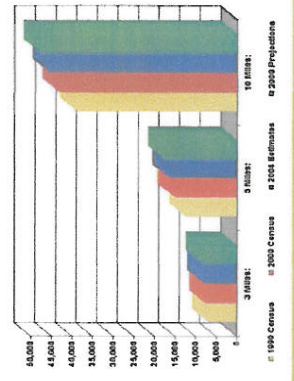
- Bank or Credit Union
- Laboratory
- Photographic Studio
- Graphic Design Company
- Medical or Chiropractic Clinic
- Dental Clinic
- Pharmacy
- Florist
- Barbershop or Salon
- Upscale Restaurant
- For-profit Educational Center

Or one that would fit within the parameters above, then...

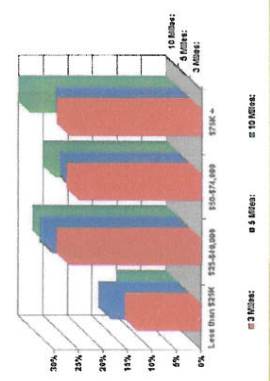
Locks Business Park is The Perfect Place For Your Business!

Current Geographic Location:
1, 3, & 10 Mile Radius
County Highway CE & DeBruin Road

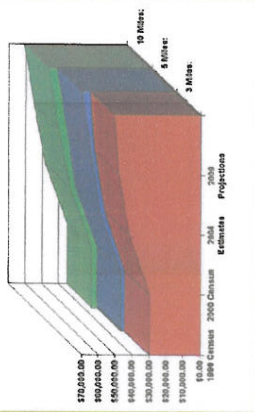
Households



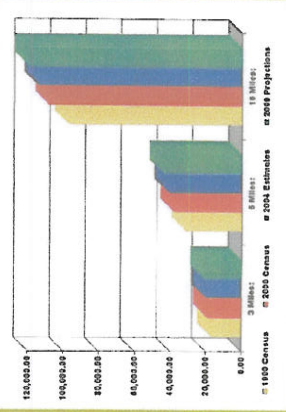
Percent of Households By Income



Median Household Income



Population



Don't miss out on an outstanding opportunity to reach this rapidly developing area.

For more details call Dave Green at
920-242-8462. Roland Coarlen
920-470-8039

Regional detention pond for storm water management already in place.